

Vacon FCLoad Quick Guide © Vacon 1998

To load Vacon softwares & applications in to the Vacon frequency converter, Vacon FCLoad software is needed. To install Vacon FCLoad, place the diskette enclosed in drive A: and run SETUP.EXE. Connect your computer to the Vacon FC with RS232C serial link cable. RS plug you can locate by removing the control panel of the FC.

System Program (sm00000a.bin)

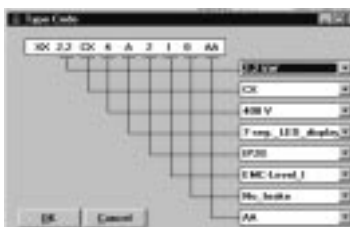
To download system program:

1. Push the *System Program* button.



0=whatever
a=revision
bin=binary file
hex=hex file

2. Choose the right Type Code by pushing *Change* button and selecting values from the combo boxes.

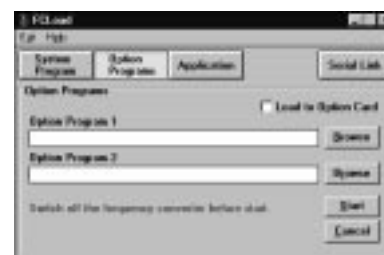


3. Write the name of the system program file to field File:, or use the *Browse* button.
4. Make sure that your frequency converter is *turned off*.
5. Push *Start* button.
6. Turn your frequency converter on. The program will now load the software to the frequency converter.
7. When loading is done reset the FC by switching power off and then on.

Option Programs (sm0000a.hex)

To download option program(s):

1. Push the *Option Programs* button
2. Write the name of the option program file to field Option Program 1 and /or Option Program 2, or use the *Browse* buttons.
3. If you want the option program to be loaded to option card during the next power-on, check the *Load to Option Card*.
4. Make sure that your frequency converter is turned off.
5. Push *Start* button.
6. Turn your frequency converter on. The program will now load the option program to the frequency converter. When loading is done reset the FC by switching power off and then on.



Application (smfa0000a.hex and smcu0000a.hex)

1. Push the *Application* button.
2. Write the name of the application file to field Application, or use the *Browse* button.
3. Make sure that your frequency converter is turned on all the time.
4. Push *Start* button. The program will now load the application to the frequency converter.
5. To select special (loaded application) go to parameter 0.1 and select 0.

